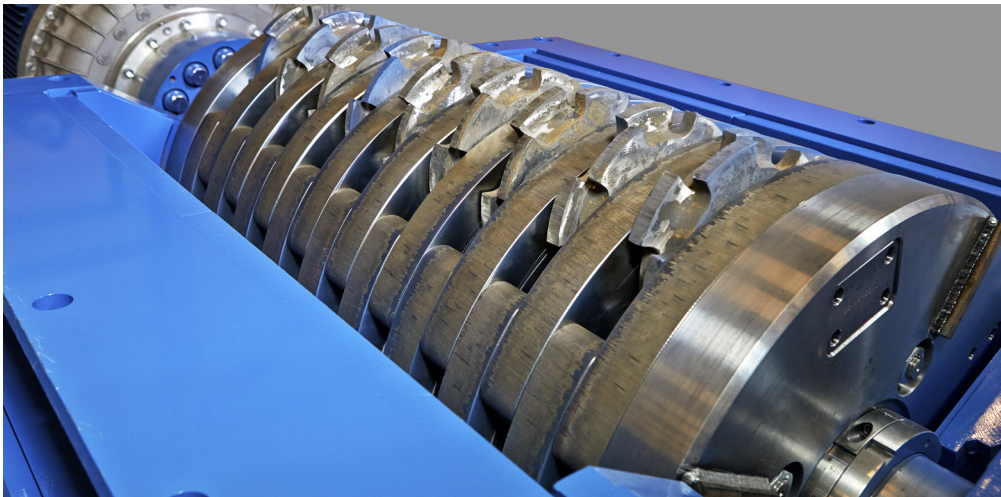
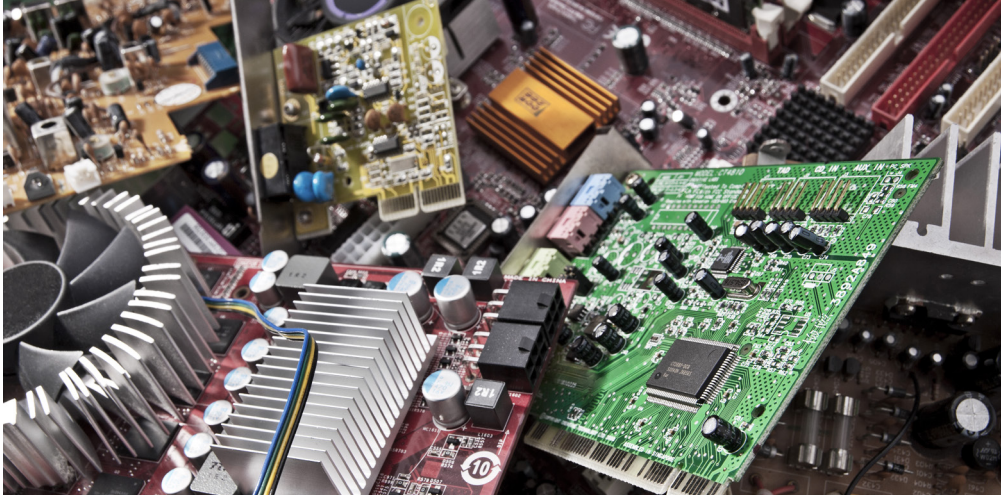


# The best of WEEE recycling

Minimal loss of metals. Highly attractive output metal fraction. Flexible production. Impressive performance. Low processing costs.





## Eldan WEEE recycling plants and machines

In Eldan WEEE\* recycling plants most of the items mentioned in the WEEE Directives of EU can be processed. To achieve the required type of end-product different standard recycling plants are available. These standard plants are also the starting point when plants are tailored to suit specific customer requirements.

The flexibility of the modular approach means that a number of combinations can be obtained, ranging from a single machine to complete systems. The Eldan plants are designed for automatic processing, i.e. staff is required for surveillance only.

\*Waste Electrical and Electronic Equipment

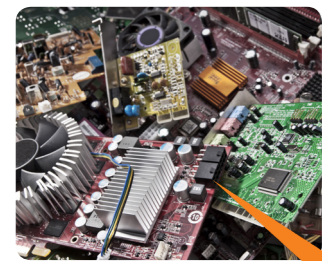
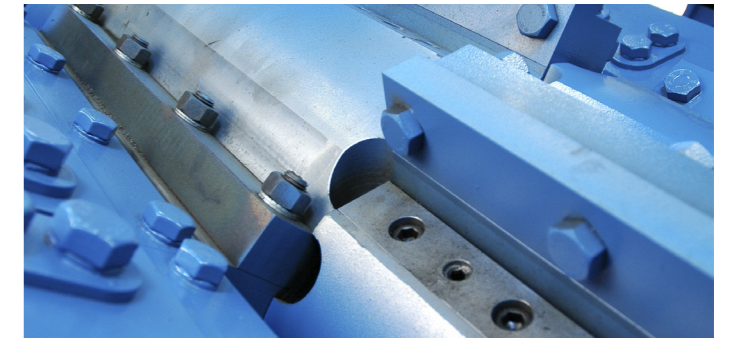
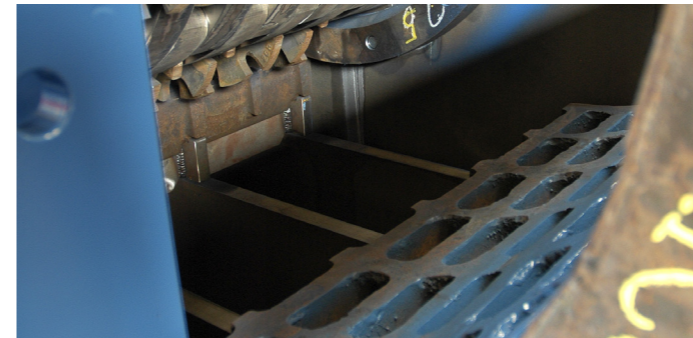
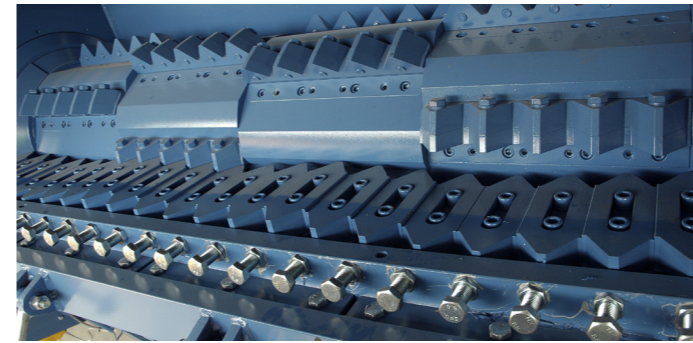
## Proven technology

Eldan equipment is designed to meet market requirements, thus the individual machines can easily be adjusted to other fraction sizes, merely by changing the screen size in the machines.

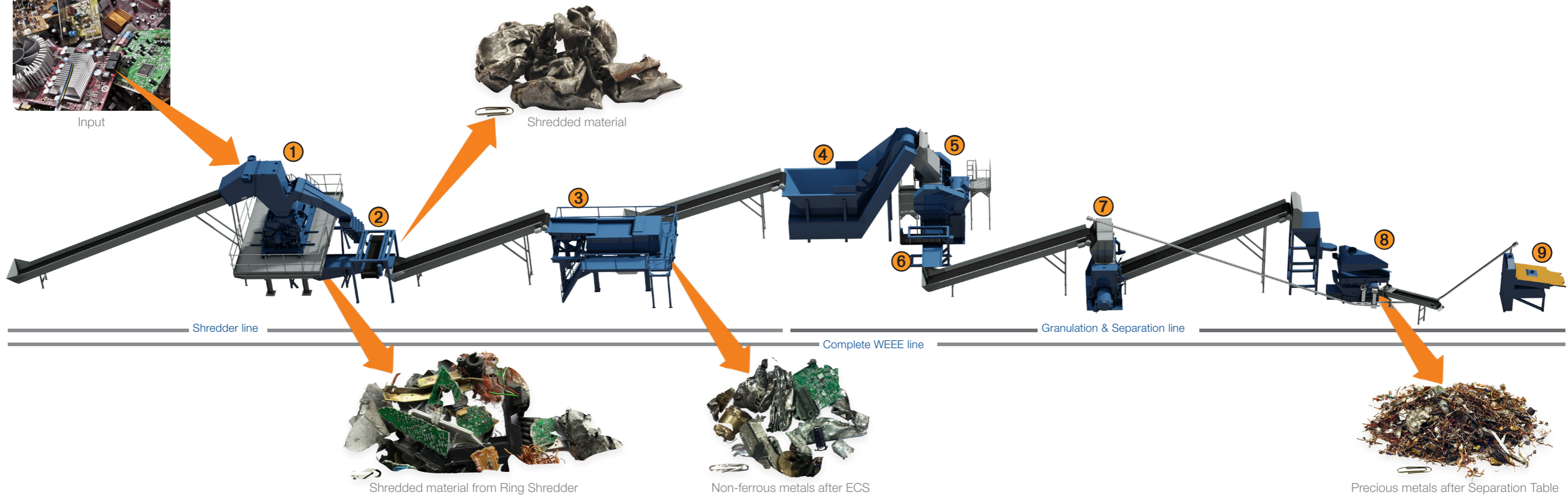
## Benefits

- ▶ High performance
- ▶ Low processing costs
- ▶ Low power consumption
- ▶ Low maintenance costs
- ▶ Metal fraction suitable for selling to copper smelters and precious metal refineries
- ▶ Minimum loss of metals
- ▶ Ambient mechanical technique for size reduction and separation
- ▶ Efficient material liberation ensures superior final separation
- ▶ Minimal dust and fines
- ▶ Eldan plants are tailored to suit your requirements and facilities

**We guarantee plant capacity and output product quality.**



Input



**1. Shredder.** A powerful, high-speed Ring Shredder for size reduction of WEEE scrap enabling the majority of ferrous material to be removed.

**2. Electro Magnet.** Removal of liberated Fe

**3. Eddy Current Separator (ECS).** This Eddy Current Separator ensures the separation of large size pieces of non-ferrous metals from the organic/wire fraction.

**4. Tumble Back Feeder.** This machine ensures a continuous flow into the Multi Purpose Rasper thus ensuring an optimum load/ utilization of the Multi Purpose Rasper.

**5. Multi Purpose Rasper.** This machine is an effective, medium-speed, single shaft Rasper designed for WEEE recycling. It ensures individual size reduction down to approx. 12 mm.

**6. Overband Magnet.** Removal of liberated Fe

**7. Heavy Granulator.** A high-speed, single shaft Heavy Granulator for the final granulation stage.

**8. Air Separation Table.** The Separation Table is used for the final

separation of the mixed fraction into an organic (plastic) fraction and a mixed metal fraction.

**9. Classifier.** The Classifier will effectively remove copper and aluminium fines from the plastic fraction coming from air separation table. It consists of two layers of screens and a bottom tray.



## Optional modules for specific customer requirements

### ELDAN Super Chopper

A powerful, low-speed, single or dual shaft pre-chopper used for pre-chopping of the input material – partly to size reduce the input and partly to increase the capacity of the WEEE recycling plant.



ELDAN Super Chopper

### Drum Wind Screen

Used for cleaning of the steel fraction.

### Water Separation Table

Used for recovery of metals from the organic (plastic) fraction.



Water separation table

### Ensure reduced downtime!

- ▶ The Eldan After Sales Division offer ad hoc service on existing as well as new equipment through our trained and experienced service engineers and supervisors
- ▶ Eldan constantly holds an extensive stock of spare and wear parts
- ▶ The flexible service contracts ensure planned, preventive maintenance of your production line
- ▶ Tailored contracts ensure that parts are available for immediate call off
- ▶ Contact one of our spare and wear part coordinators, and we will supply the best possible solution for your company

The Eldan After Sales Division is your reliable partner!

